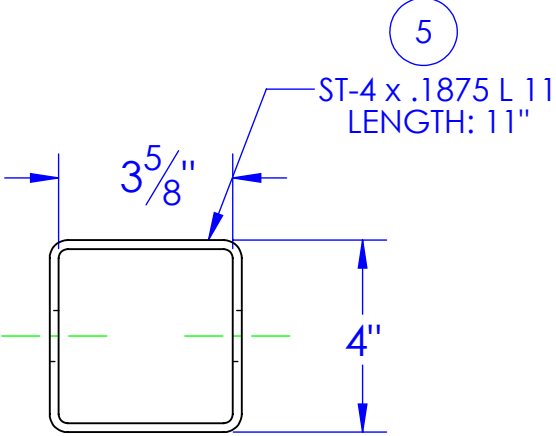
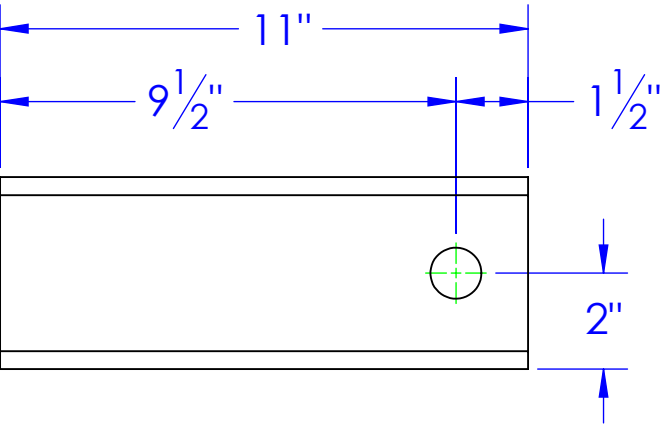
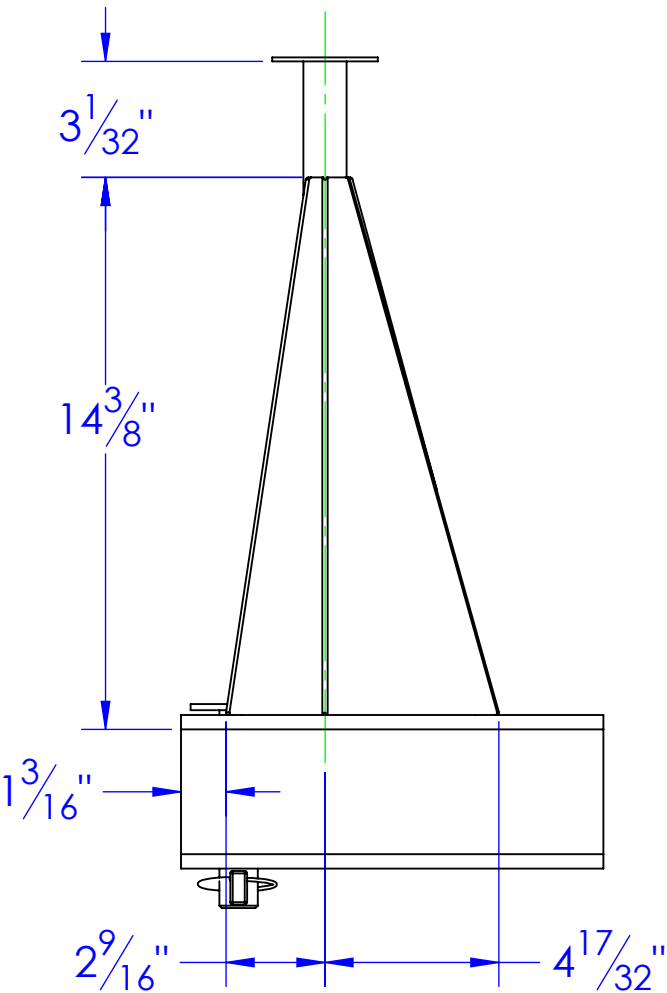
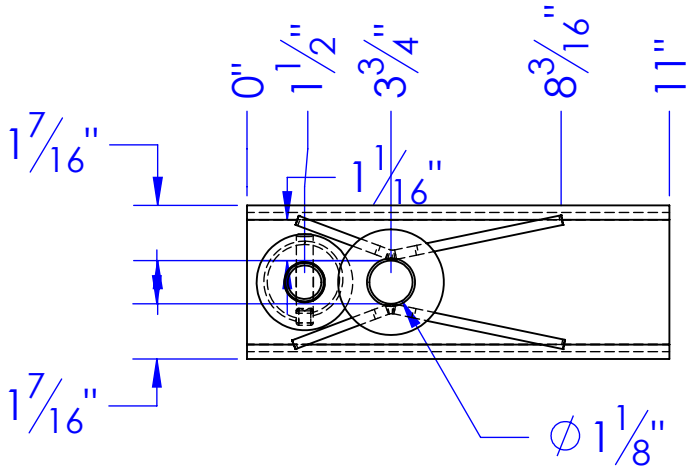
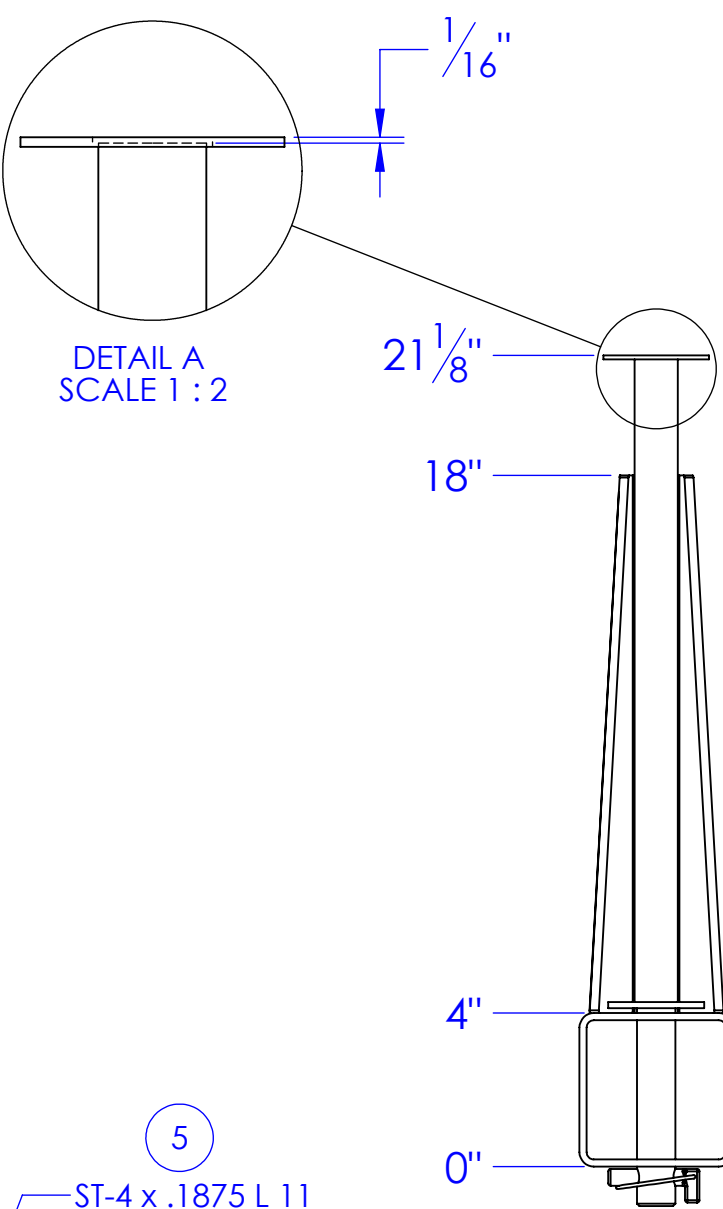
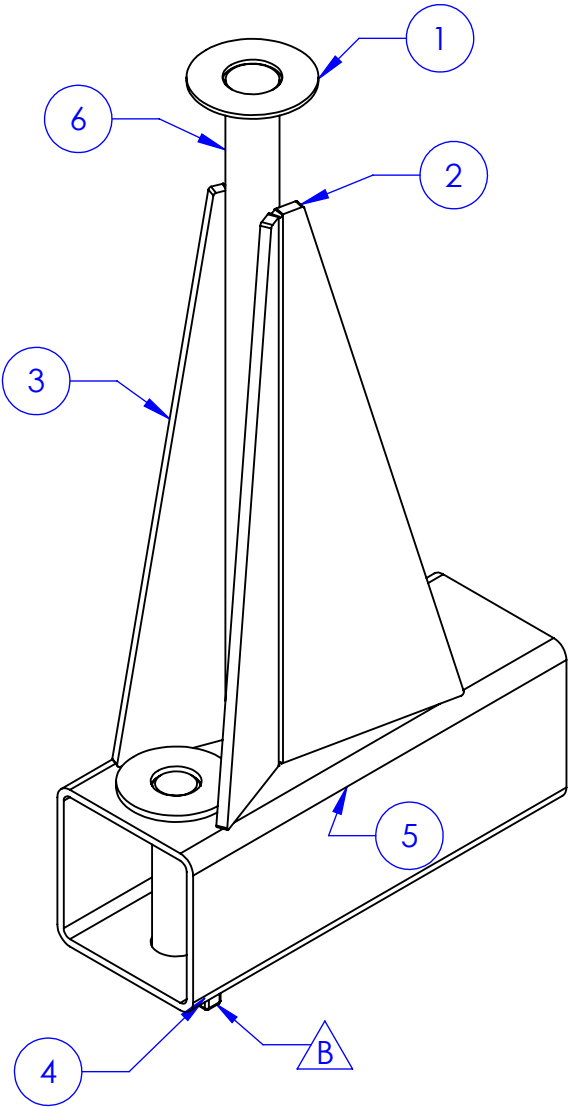


ITEM NO.	PART NUMBER	DESCRIPTION	DRAWING #	QTY.
1	BO-1.125 FW	FLAT WASHER 1"	STOCK	1
2	FP-HFLP-HD-ST1	LIFT PIN HEAVY DUTY STIFFENER RIGHT SIDE	30-2423	1
3	FP-HFLP-HD-ST2	LIFT PIN HEAVY DUTY STIFFENER LEFT SIDE	30-2424	1
4	RE-PN-C1x525	PIN, CON, 5-1/4"	10-1707	1
5	ST-4 x .1875 L 11	LENGTH: 11"	STOCK	1
6	STC-CR 1.125x4142. L 17.0625	LENGTH: 17-1/16"	30-1401	1

REV.	REVISIONS DESCRIPTION	DATE	APPROVED
B	UPDATED PIN TO RE-PN-C1x525 FROM RAW MATERIALS	11/30/2012	

REQD QTY: 2



**PROPRIETARY AND CONFIDENTIAL**  
THE INFORMATION CONTAINED IN THIS DRAWING IS THE SOLE PROPERTY OF <INSERT COMPANY NAME HERE>. ANY REPRODUCTION IN PART OR AS A WHOLE WITHOUT THE WRITTEN PERMISSION OF <INSERT COMPANY NAME HERE> IS PROHIBITED.

UNLESS OTHERWISE SPECIFIED:  
DIMENSIONS ARE IN INCHES  
TOLERANCES:  
FRACTIONAL  $\pm 1/16$   
ANGULAR: MACH  $\pm 1$  BEND  $\pm$   
TWO PLACE DECIMAL  $\pm 0.10$   
THREE PLACE DECIMAL  $\pm 0.05$   
MATERIAL  
DO NOT SCALE DRAWING

DRAWN	NAME	DATE	P.O. BOX 248, SABETHA KS. 66534 (785) 284-3674 FAX (785) 284-3931	
PART #	HEATH	11/30/2012	<b>TRIPLE C</b> INC.	
ASM #	HF-HFLP-HD-150			
COMMENTS:			SIZE	REV
150 HF HD LIFT PINS			B	B
			DWG. NO.	
			30-1400 B	
			SCALE: 1:5	SHEET 1 OF 1
			WEIGHT: 23.07	